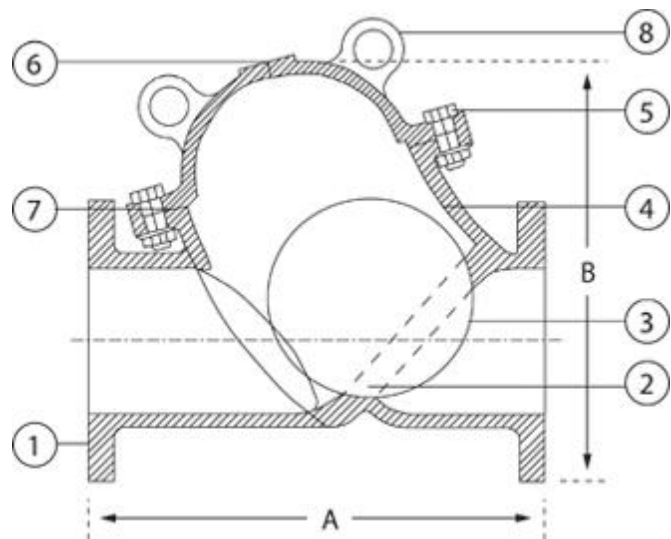


DUAL SLIMLINE BALL NON-RETURN VALVE



DUAL's Slimline Valve's heart is a reinforced urethane or rubber ball. The unique design of the valve allows free movement of the ball. The ball lifts completely out of the flow when the pump starts and allows free flow of liquid without any interference. As the pump stops, the ball falls and positively locates in the seat due to its own weight and back pressure of the liquid. This results in dropleess sealing.

FEATURES

- Perfect sealing.
- Low head losses.
- Non clogging, self cleaning ball.
- Minimum back pressure for tightness: 0.3 to 0.5bar
- Removable bonnet for cleaning or replacing of ball.
- Maintenance free.
- Full bore.
- Silent, non-slam, reduces pipe hammer.
- **Fabricated valves face-to-face can be altered to suit different types of valve face-to-face dimensions.**
- Simple construction - one moving part.

PRODUCT SPECIFICATION

Size Range: 40mm - 600mm Larger sizes on request.

Pressure: See table below.

Types: Types: Bell foot valve.

Size in mm	A	B	KGS
80	305/260/260	340	80
100	355/330/300	470	120
150	445/410/400	600	200
200	535/540/500	600	250
250	635/640/600	900	370
300	760/700/700	950	440
350	865/830/800	980	500
400	965/920/920	1150	950
450			980
500	Consult Factory		1200
600			1500

Valve available in 3 different face-to-face dimensions.

	Part	Description
1	Body	Carbon Steel/Cast Steel/Stainless Steel
2	Body Seat	Roc-Tuf, S.S., Urethane or Rubber
3	Ball	Aluminium insert, W/Urethane or Rubber coating
4	Valve Body Lining	Rubber, Urethane or Ceramic
5	Bolts and Nuts	Cadmium Plated Steel
6	Paint	Epoxy Powder coated or painted to custom spec.
7	Body Gasket	'O' Ring
8	Lifting Lug	Carbon Steel/Cast Steel/Stainless Steel

Working Temperature: Valves have Lifting Lugs Hole Sized.

Thrush Bearings: -10°C to +80°C.

Medium: Water.
Sewage.
Slurry.
Heavy, thick and viscous liquid.

Working Pressure	PN10	PN16	PN25
Shell Test Pressure	1.5MPa	2.4MPa	3.7MPa
Seal Test Pressure	1.1MPa	1.76MPa	2.5MPa
For Higher Pressures Please Consult the Factory			



drawings available on request. All dimensions are in Millimetres, unless stated.

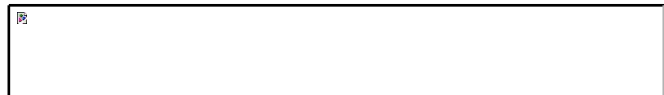
INSTALLATION



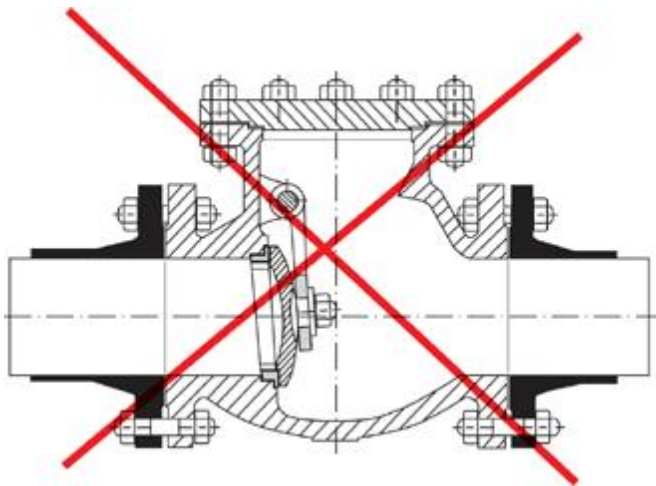
Vertical Installation



Horizontal Installation



"SFFV" REPLACE SWING-CHECK VALVES



Applications:

- Mining and mineral processing
- Power generation
- Sand and gravel
- Chemical and soda ash
- Sewage
- Pulp and paper
- Environmental and Effluent
- Water

[Click here to download / print this page](#)

[Dual Dashley Double Ball Check Valve](#) | [Dual Pinch Valve](#) | [Dual Slurry Air Release](#) | [Dual Valve](#) | [Dual High Performance Knife Gate](#)
[Dual Slimline Ball Non-Return Valve](#) | [Dual Rotary Disc Valve](#)

Corporate Headquarters :
21 Bedford Avenue
Benoni
South Africa
website : www.dualvalves.com

P.O Box 12520
Benoryn 1504
Tel : +27 11 422 4326/7
Fax: +27 11 421-7842
email : sales@dualvalves.com

[Back to top](#)